



a great nation...

Dutchmen
2002 TRAVEL TRAILERS & FIFTH WHEELS

2002




...a great vacation

2002

2002 Lites

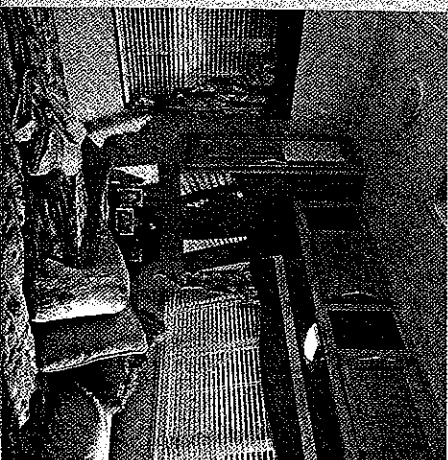
The 2002 Dutchmen Lite travel trailers and fifth wheels are your best choice for quality and function at an affordable price. Lites are specifically designed to be towed by many of today's most popular vehicles. You may already be driving the vehicle you need for towing. But you won't have to sacrifice comfort or convenience to get the Lite towing advantage. Our Lites are built with the same quality materials and workmanship as the other Dutchmen family members. With lengths up to 30' and many new and inviting floor plans, there is sure to be a lite model to fit your family's needs.

A black and white photograph showing the interior of a Dutchmen Lite travel trailer. The view is from the front of the trailer looking back. On the left is a large, patterned sofa. In the center is a dining table with two chairs. On the right is a kitchen area with a sink, stove, and cabinets. A window with blinds is visible at the back of the trailer.

The Dutchmen Lite gives you all the advantages of much larger trailers without giving up comfort and convenience. Our lites pack a lot of living into their smaller size. Living areas are carefully planned to take maximum advantage of space and are designed and decorated for comfort.



A quality innerspring mattress assures you a good, restful sleep, and ample storage and wardrobes allow you to take along all the clothes you'll need.



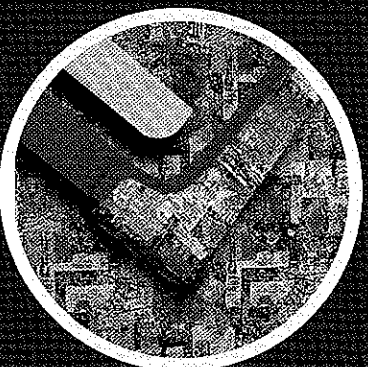


You'll find you don't have to give up a lot of comfort or convenience for the sake of lightweight touring. Kitchens are designed to take advantage of every bit of available space and give you all the convenience of home.

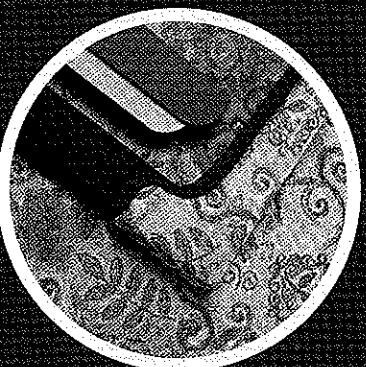
Available in a wide selection of both trailer and fifth wheel floor plans, and three distinctive interior colors, there is sure to be a Lite to fit your camping lifestyle.



Sagebrush Green or Taupe



Mimic Blue, Taupe or Green



Imperial Rose, Green or Taupe

2002 Lite Standard Features & Options

Exterior

- 30" radius entry door (most floor plans)
- Flush combo entry/latch/dead bolt lock
- Hitch light
- Patio light
- Front flush mount combination window/rock guard
- Radius exterior "Storage Plus" (where possible)
- Rain gutter w/corner downspout along the roof line
- Tinted radius clamp ring windows
- Pre-wired for digital satellite system
- Rear bumper with sewer hose storage
- Twin 20# LP bottles with cover
- Locking insulated luggage doors with finger pulls

Construction

- Track guided electric powered flush floor slide-out system in living room slide (24KS-M5, 24RL-M5, 26RL-DSL, 26RK-M5, 27BH-M5, 27RL-M5 and 29BH-M5)
- Manual slide-out system on "SSL" models
- 1-1/2" x 2" walls on 16" centers
- 2" belt rail around the perimeter for extra strength
- Fiberglass insulation
- Reinforced studding around all entry doors and windows
- I-beam cambered chassis
- Large support outriggers w/solid continuous weld
- 5/8" exterior grade tongue and groove plywood floor
- 3/8" wood roof decking full length of the unit
- One piece seamless EPDM rubber roof
- Radius 5" truss roof rafters
- Tandem axles with 4 wheel electric brakes
- Standard double or triple entry steps
- New quad lock slide seal

Interior

- 8 color coordinated designer interiors
- Solid oak framed cabinet doors
- Mini-blinds throughout
- Decor coordinated bedspread
- Quality furniture
- Skylight roof vents

Innenspring mattress

- Designer valances
- Laminated countertops
- Medicine cabinet with mirror
- Towel bar
- 12 volt power exhaust roof vent in bath
- Shower curtain
- GFI protected 120 volt duplex receptacle
- Decor wall border in kitchen
- ABS tub surround
- Double bowl white acrylic sink with high rise faucet
- Swivel rocker (not all models)

Appliances/Equipment

- Norcold gas/electric refrigerator
- 3 burner high-output range
- 6 gallon quick-recovery gas/electric water heater
- Hydro flame forced air DSI furnace with wall thermostat
- Smoke detector
- Fire extinguisher
- LP gas leak detector
- Demand water pump
- Water heater bypass
- TV antenna with power booster
- Cable TV hook-up
- Range hood with 12 volt light and exhaust fan
- Wall mounted systems memory panel
- Thetford toilet
- Solid state converter with built in battery charger
- 120 volt duplex receptacles throughout
- 120 volt patio receptacle
- Prepped for optional exterior Vico Grill
- Memorex AM/FM stereo with CD player

Options

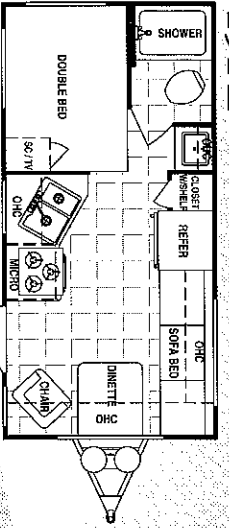
- (Not all options available on all floor plans)
- Fiberglass package (includes)
- Laminated aluminum framed walls
- *Front lower ABS cap on travel trailers
- *Front ABS cap on fifth wheels

Rear ladder

- Spare tire kit with carrier and cover
- Front or rear stabilizer jacks
- Electric front jacks — Fifth wheels
- Power tongue front jack — Travel trailers
- Outside shower
- 12 volt ultra heat pads - all tanks
- Rear stone guard (some models)
- Safety glass
- Reese 15k fifth wheel hitch
- Living room carpet and pad
- Bedroom carpet and pad
- Solid oak cabinet doors throughout
- Hide a bed sofa (24RL-M5, 26RL-DSL, 26RK-M5, 27BH-M5, 27RL-M5, and 29BH-M5)
- Skylight in tub area
- Bi-fold shower door
- 6 gallon gas/electric water heater with DSI
- Solid oak raised refer front
- Double door refer
- 3 burner range with oven replacing 3 burner cooktop
- Sink cover
- Stove cover
- 13.5 BTU air conditioner (ducted on 24RL-M5 and 25 and up, travel trailers and fifth wheels)
- Microwave
- 30# bottles with cover
- ABCE patio awning
- Water filter
- Exterior Vico Grill
- Cassette player for stereo
- Slide out overhead cabinets (std on 24RL-M5, 26RL-DSL, 24KS-M5, 26RK-M5, 27RL-M5, 27BH-M5 and 29BH-M5)
- Front lower ABS rock guard on travel trailers
- Full front ABS cap on fifth wheels
- Slide tray for Storage Plus
- Walk thru bath w/zero angle shower (some fifth wheel models)

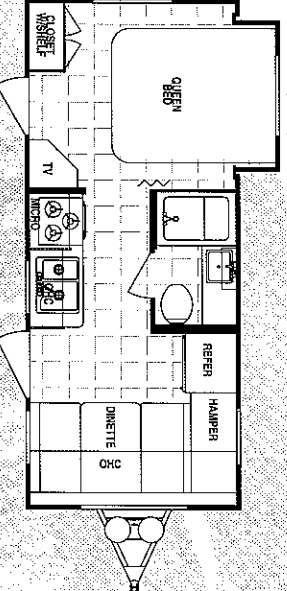
2002 Lite Travel Trailer Floor Plans

19FL

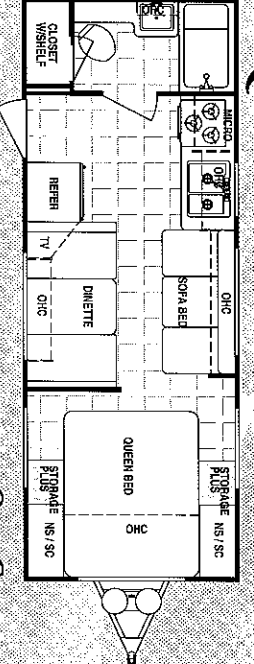


Opt. P

22BS-SSL

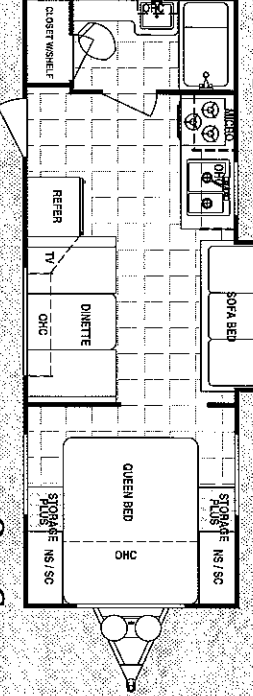


24QB



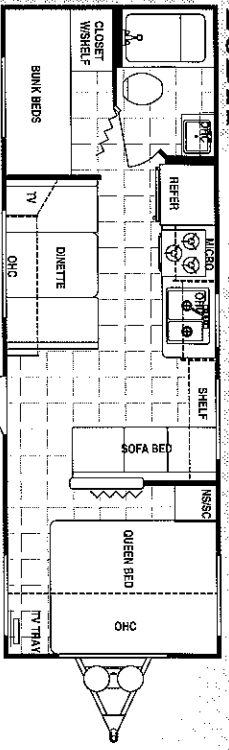
Opt. C
Opt. 2nd entry door in bedroom.

24QB-SSL



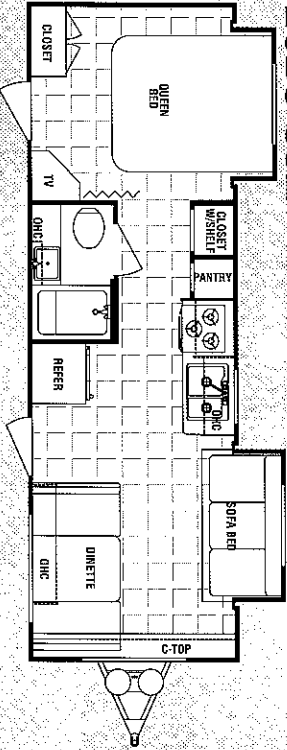
Opt. C
Opt. 2nd entry door in bedroom.

26BH

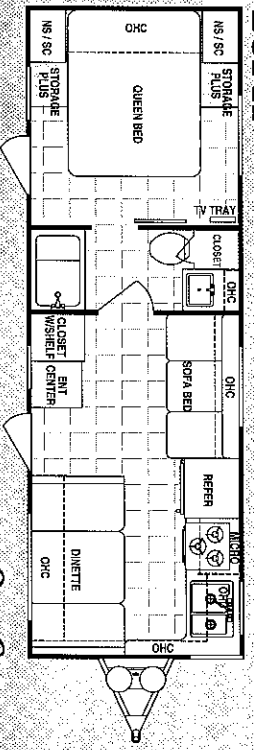


Opt. B, P, S

26BS-SSL

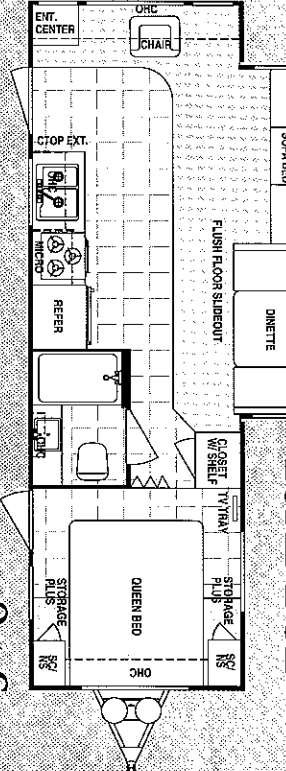


26FK



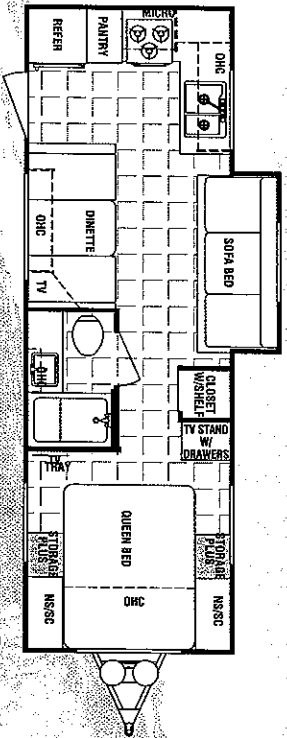
Opt. C
(Lose rear door)

26RL-DSL



Opt. C
(Lose front entry door)

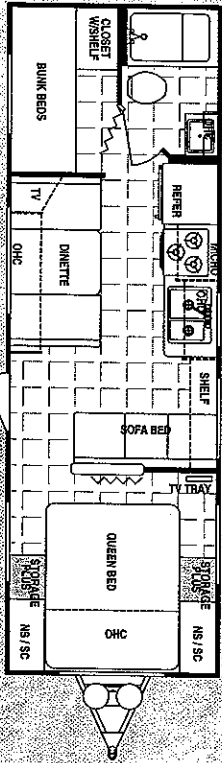
26QB-SSL



Opt. C

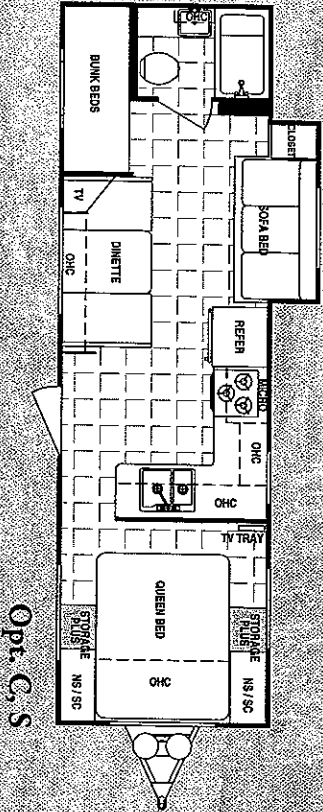
Opt. 2nd entry door in bedroom.

27BH



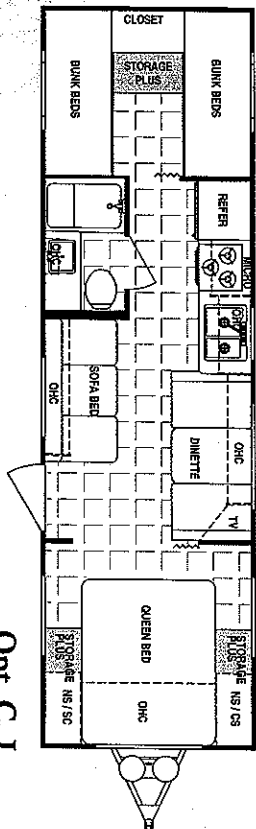
Opt. B, C, R, S

28BH-SSL



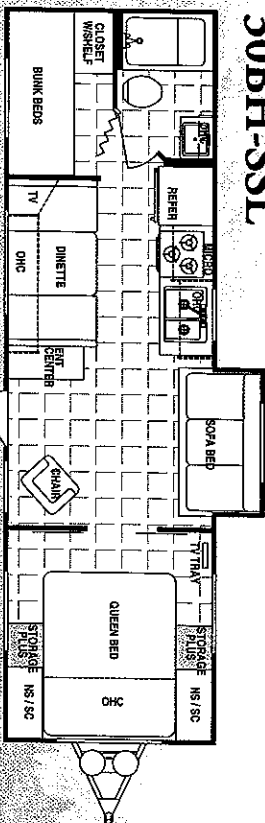
Opt. C, S

29QB



Opt. C, J

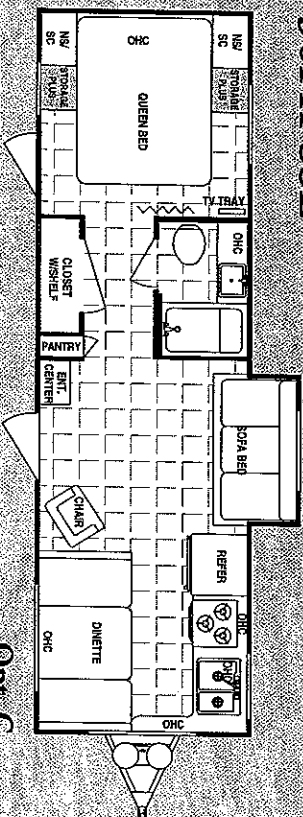
30BH-SSL



Opt. B, C, P, S

Floor plan available without slide.

30FK-SSL

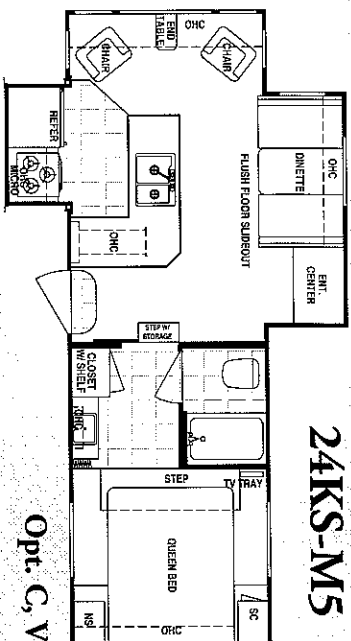


Opt. C

(Close rear door)
Floor plan available without slide.

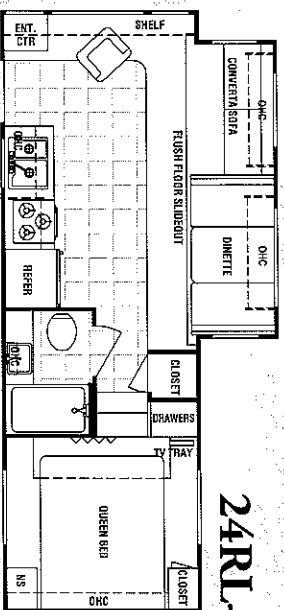
2002 Lite Fifth Wheel Floor Plans

24KS-M5



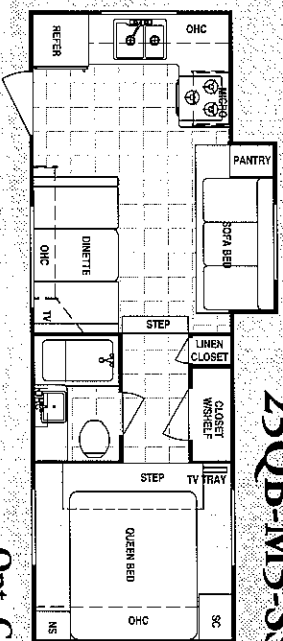
Opt. C, V

24RL-M5



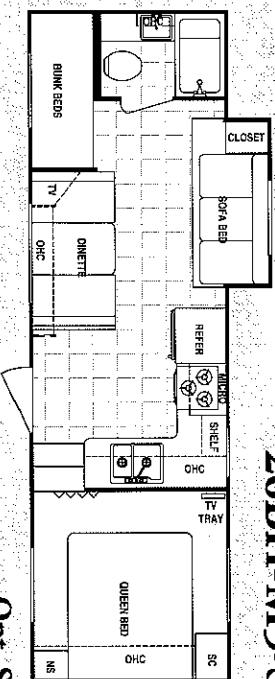
Opt. C

25QB-M5-SSL



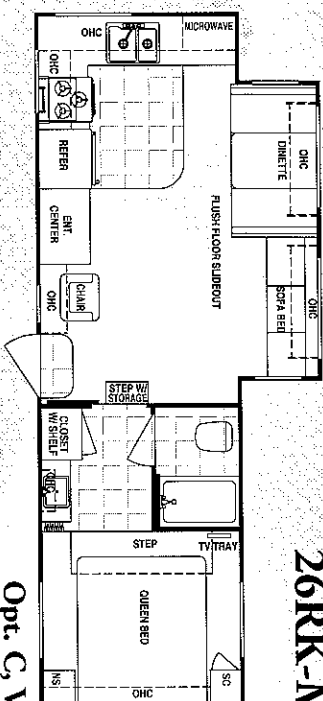
Opt. C

26BH-M5-SSL



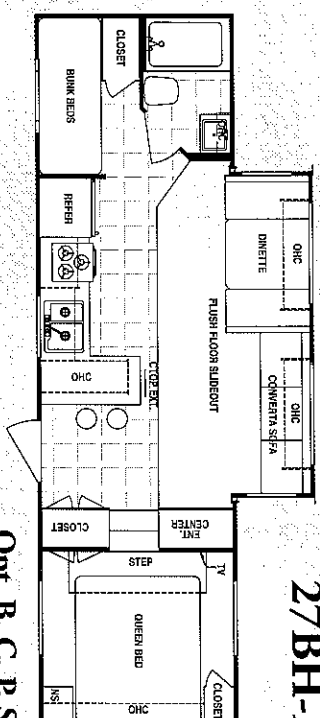
Opt. S

26RK-M5



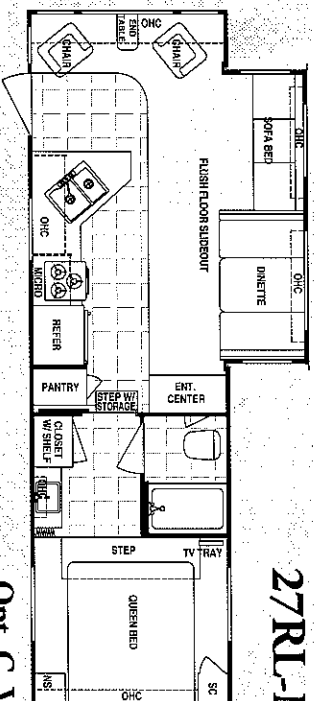
Opt. C, V

27BH-M5



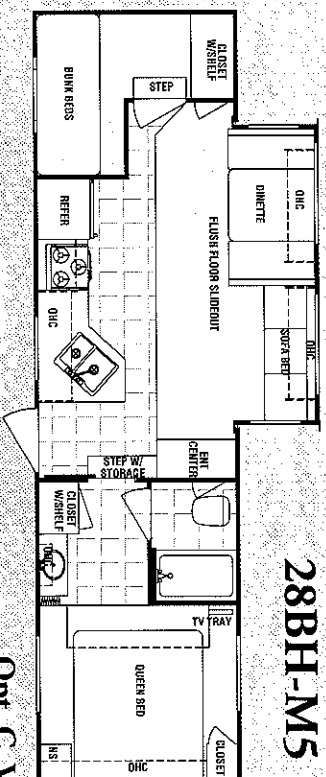
Opt. B, C, P, S

27RL-M5



Opt. C, V

28BH-M5



Opt. C, V

2002 Lite Specifications & Weights

Travel Trailers

	19FL	22BS	24QB	24QB-SSL	26BH	26BS-SSL	26FK	26QB-SSL	26RL-DL	27BH	28BH-SSL	29QB	30BH-SSL	30FK-SSL
Length	20'5"	23'	25'5"	26'5"	27'5"	27'9"	27'5"	27'9"	29'10"	28'6"	31'	31'3"	31'3"	31'4"
Exterior Width	8'	8'	8'	8'	8'	8'	8'	8'	8'	8'	8'	8'	8'	8'
Exterior Height	10'4"	10'4"	10'4"	10'4"	10'4"	10'4"	10'4"	10'4"	10'10"	10'4"	10'4"	10'4"	10'4"	10'4"
Interior Height	7'8"	7'8"	7'8"	7'8"	7'8"	7'8"	7'8"	7'8"	7'8"	7'8"	7'8"	7'8"	7'8"	7'8"
Hitch Dry Weight	556	438	500	614	588	852	856	508	716	714	594	646	626	922
GVWR	7556	7438	7500	7614	7588	7852	7856	7508	7716	7714	7594	7646	7626	7922
UVW	3850	4454	4302	4860	4891	5412	4930	5130	6404	4998	5360	5412	5724	5544
NCC	3706	2984	2998	2754	2694	2410	2926	2378	1252	2716	2234	2234	1902	2378
Fresh Water (approx.)	40	40	40	40	40	56	40	40	40	40	40	40	40	40
Dual Holding Tanks (approx.)	60	60	60	60	60	60	60	90	50	60	60	60	60	60
Furnace Size BTU'S	20	20	20	25	25	25	25	25	31	25	31	31	31	31

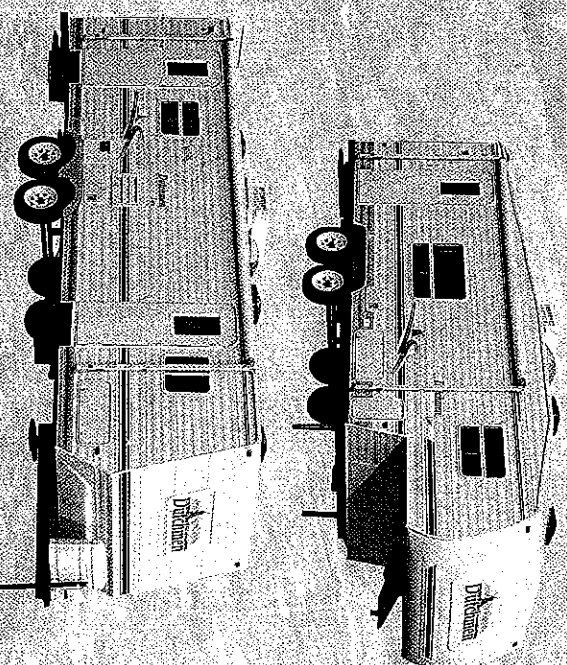
Vehicle Loading—Every effort has been made to provide the greatest number of options for the recreation vehicle owner. Along with these choices comes the responsibility to manage the loads that are imposed by the choices so that they remain within the manufacturer's specified chassis weight limits. Do not overload the recreation vehicle.

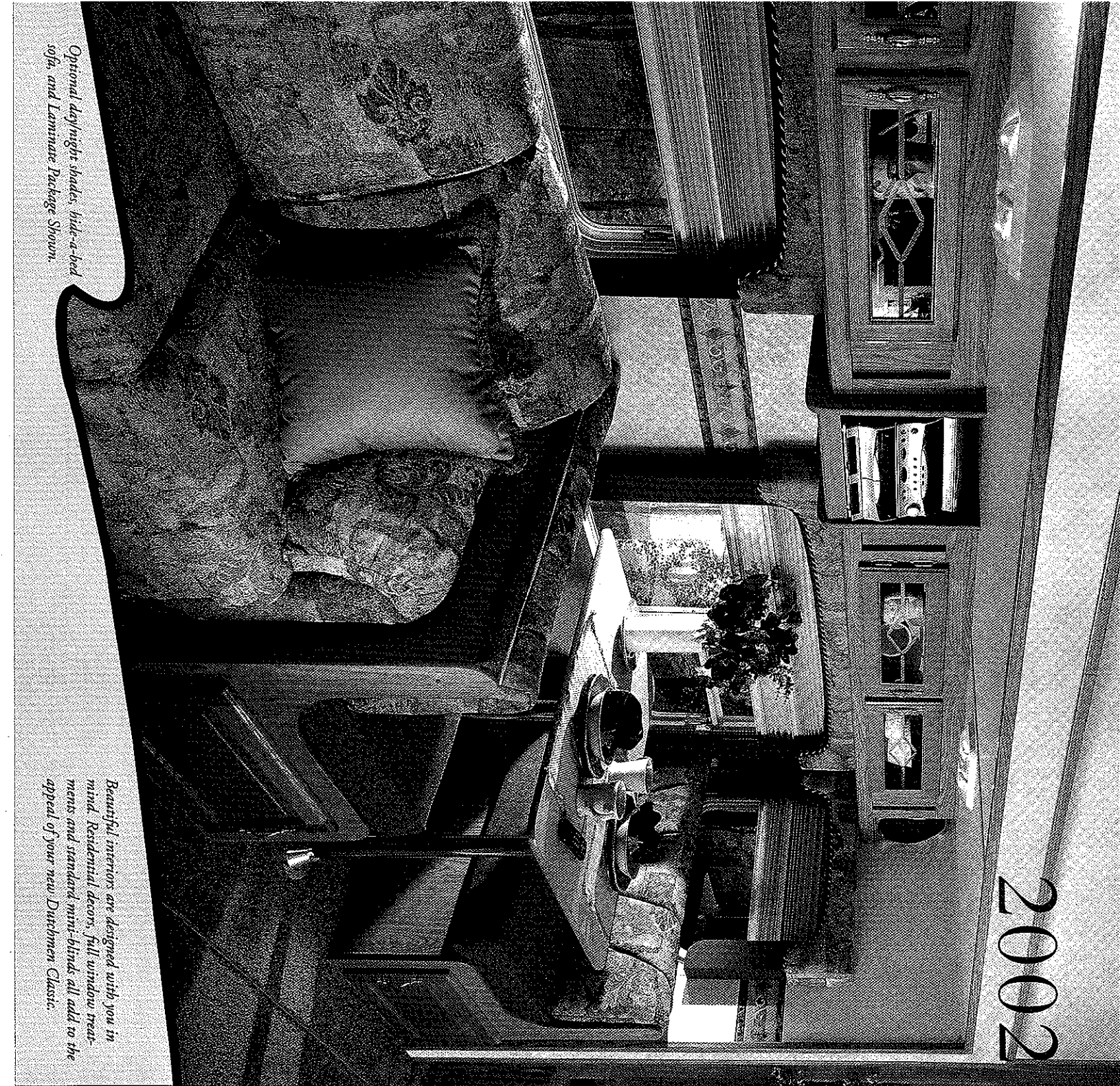
Dry weights based on standard features; optional equipment not included. Net carrying capacity (NCC) determined by subtracting unloaded vehicle weight (UVW) from gross vehicle weight (GVWR) and includes fluids, options and cargo. Liquid capacities and weights are approximations only.

Warning: This information is intended as a guide only. Weights of individual vehicles may vary. Consult your owner's manual for complete loading, weighing and towing instructions.

Fifth Wheels

	24KS-M5	24RL-M5	25QB-M5-SSL	26BH-M5-SSL	26RK-M5	27BH-M5	27RL-M5	28BH-M5
Length	27'	N/A	26'9"	28'	29'4"	30'10"	30'3"	N/A
Exterior Width	8'	8'	8'	8'	8'	8'	8'	8'
Exterior Height	12'5"	12'5"	11'7"	11'4"	12'5"	12'5"	12'5"	12'8"
Interior Bedroom Height	5'8"	5'8"	5'8"	5'8"	5'8"	5'8"	5'8"	5'8"
Hitch Dry Weight	1536	896	944	1042	1156	1234	1288	1244
GVWR	8536	7896	7944	8042	9956	10,034	10,088	10,044
UVW	7228	6216	5894	5944	7330	7240	7570	7746
NCC	1308	1680	2050	2098	2656	2814	2518	2298
Fresh Water (approx.)	40	50	40	40	50	50	50	50
Dual Holding Tanks (approx.)	60	60	60	60	60	60	60	60
Furnace Size BTU'S	31	31	25	25	31	31	31	31





2002

Classic

True classic in every sense, the Dutchmen Classic travel trailers and fifth wheels display all the quality and value that you are looking for in your RV. Take a peek at the 2002 Dutchmen Classic and you will find all the comfort and convenience of home.

Our years of experience and constant attention to our customers have taught us what you most want in an RV and we've put that knowledge into designing the finest selection of floor plans we've ever offered. There is sure to be a 2002 Dutchmen Classic that is just right for your family's lifestyle.

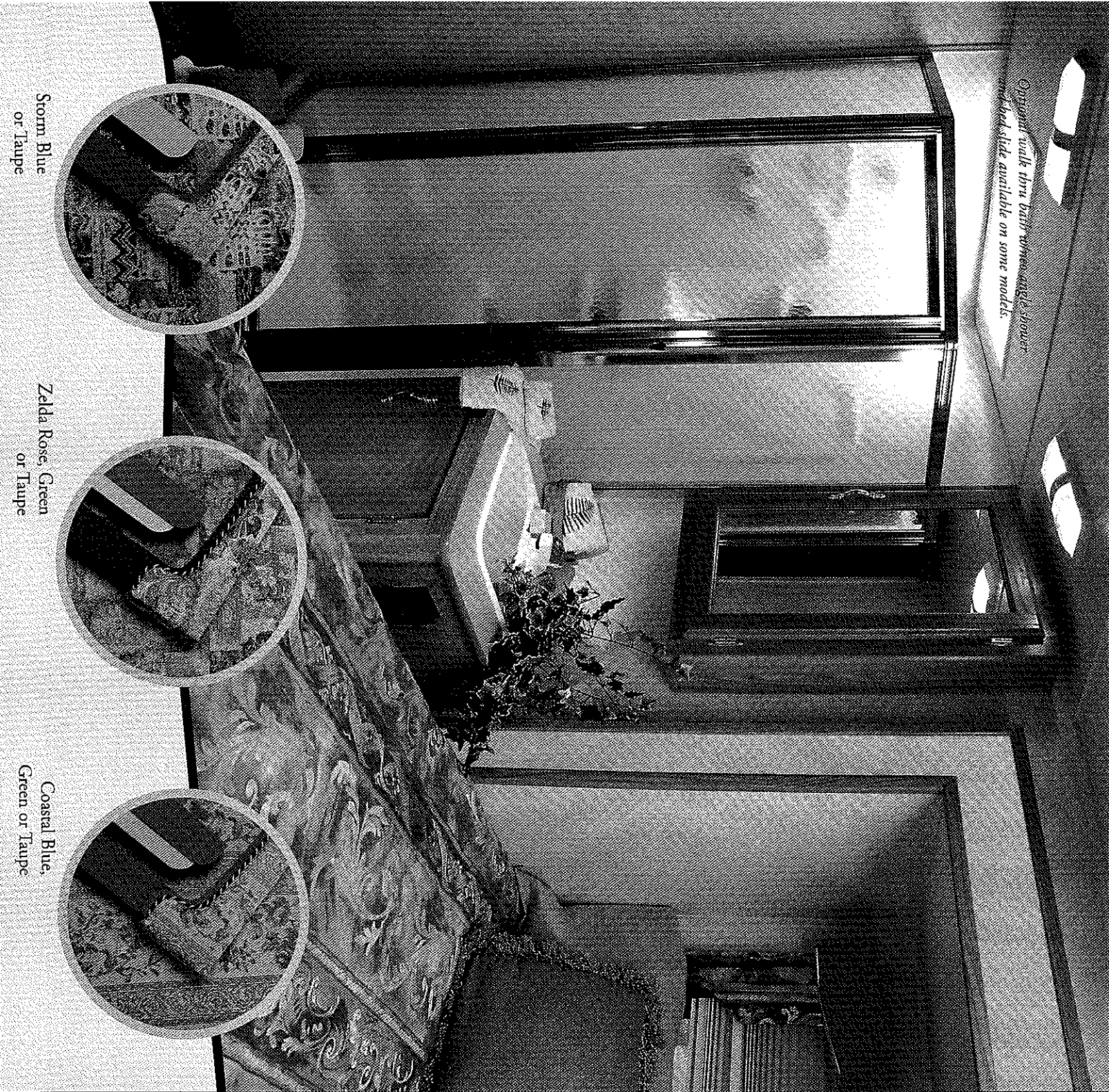
Optional day/night shades, hide-a-bed sofa, and Laminate Package Shown.

Beautiful interiors are designed with you in mind. Residential decors, full window treatments and standard mini-blinds all add to the appeal of your new Dutchmen Classic.

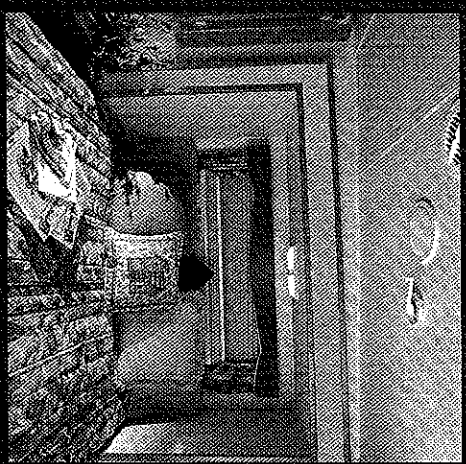
Residential appliances, larger sinks, and a bedroom with all the features you find at home, we have done a lot to make sure that you'll love your new home away from home. Kick back, relax, and enjoy your new Dutchmen Classic.



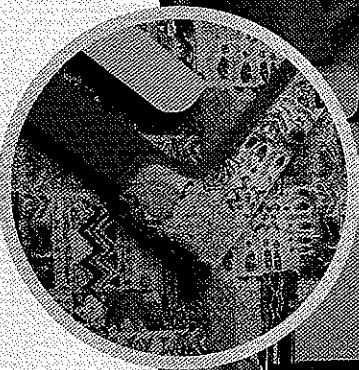
Optional walk thru bath with angle shower and bed slide available on some models.



With superior design and construction, high quality appliances, beautiful cabinetry, stylish luxurious fabric choices, and fine furniture, there is simply no other trailer that gives you so much for your investment.



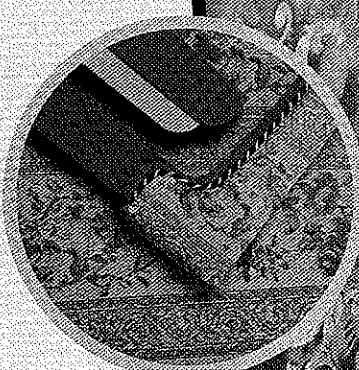
Storm Blue
or Taupe



Zelda Rose Green
or Taupe



Coastal Blue,
Green or Taupe



Annish Green
or Taupe



2002 Classic Standard Features & Options

Exterior

- 30" radius entry door (most floor plans)
- Flush combo entry latch/dead bolt/lock
- Hitch light
- Patio light
- Radius exterior "Storage Plus" (where possible)
- Rain gutter w/corner downspout along the roof line
- Tinted radius clamp ring windows
- Pre-wired for digital satellite system
- Rear bumper with sewer hose storage
- Duo pane patio sliding door on 36"-up travel trailers
- Twin 30# LP bottles with cover
- Locking insulated luggage doors with finger pulls

Construction

- Track guided electric powered flush floor slide-out system in living room/large slide
- 2" x 2" walls on 16" centers
- 2" belt rail around the perimeter for extra strength
- Fiberglass insulation
- Reinforced studding around all entry doors and windows
- I-beam cambered chassis
- Large support outriggers w/solid continuous weld
- 5/8" exterior grade tongue and groove ply wood floor
- 3/8" wood roof decking full length of the unit
- One piece seamless EPDM rubber roof
- Radius 5" truss roof rafters
- Tandem axles with 4 wheel electric brakes
- Standard double or triple entry steps
- New quad lock slide seal system

Interior

- 10 color coordinated designer interiors
- Solid oak framed cabinet doors
- Mini-blinds throughout
- Decor coordinated bedspread
- Quality furniture
- Skylight roof vents
- Inset spring mattresses
- Designer valances
- Laminated counter tops
- Medicine cabinet with mirror
- Towel bar
- 12 volt power exhaust roof vent in bath

Shower curtain

- GFI protected 120 volt duplex receptacle
- Sink cover
- Stove cover
- Decor wall border in kitchen
- ABS tub surround
- Living room carpet
- Master bedroom carpet
- Double bowl white acrylic sink with high rise faucet
- Swivel rocker (not all models)
- Slide-out overhead cabinets with glass doors (living room slide only)

Appliances/Equipment

- Norcold double door gas/electric refrigerator
- Microwave
- 3 burner high output range with oven
- 6 gallon quick recovery gas/electric water heater
- Hydro flame forced air DSI furnace with wall thermostat
- Smoke detector
- Fire extinguisher
- LP gas leak detector
- Demand water pump
- 13.5 BTU ducted air conditioner
- Water heater bypass
- TV antenna with power booster
- Cable TV hook-up
- Range hood with 12 volt light and exhaust fan
- Wall mounted systems monitor panel
- Theatroid toilet
- 110 volt residential style refer on travel trailers 36' and up
- Solid state converter with built in battery charger
- 120 volt duplex receptacles throughout
- 120 volt patio receptacle
- 120 volt patio awning
- A&E patio awning
- Prepped for optional exterior Vico Grill
- Memorex AM/FM stereo cassette with 3 disc CD player

Water filter

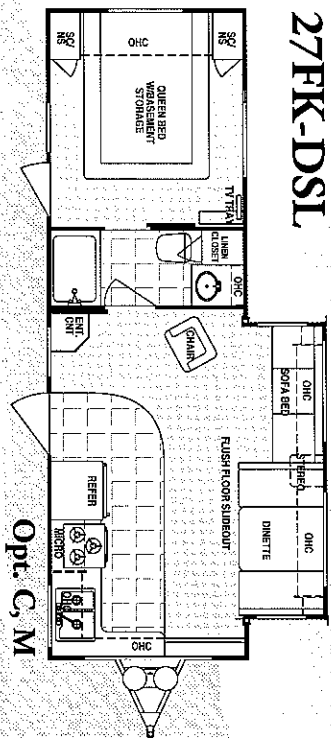
- Spare tire kit with carrier
- Front or rear stab jacks
- Electric front jacks - Fifth wheels
- Power tongue front jack - Travel trailers
- Outside shower
- Entry assist handle
- 12 volt ultra heat pads - all tanks
- Rear stone guard (some models)
- Safety glass
- Rescue 16k fifth wheel hitch
- Solid oak cabinet doors throughout
- Recliner
- Phone jack
- Ceiling fan (fifth wheels 30' and up)
- Hide a bed sofa (slide-out models only, N/A on 28KS-H5)
- 15,000 BTU A/C
- Vinyl throughout except slide
- Fanastic fan with rain sensor
- Skylight in tub area
- Shower in place of tub
- 6 gallon gas/electric water heater with DSI
- 10 gallon gas/electric water heater with DSI
- Solid oak raised refer front
- Larger Norcold double door gas/electric refrigerator
- Walk thru bath with neo angle glass shower door (Flight Profile Fifth Wheels only)
- Exterior Vico Grill
- Front lower ABS rock guard on travel trailers with aluminum exterior walls
- Front fiberglass cap on fifth wheels
- Slide tray for storage plus
- Stare lights
- Aluminum rims (Available with Fiberglass Package only)
- Day/night shades (Available with Fiberglass Package only)
- Enclosed insulated underbelly (Available with Fiberglass Package only)

Options

- (Not all options available on all floor plans)
- Fiberglass package (includes)
- Laminated aluminum framed walls
- Front lower ABS cap on travel trailers
- Full front fiberglass cap on high profile fifth wheels
- Rear ladder

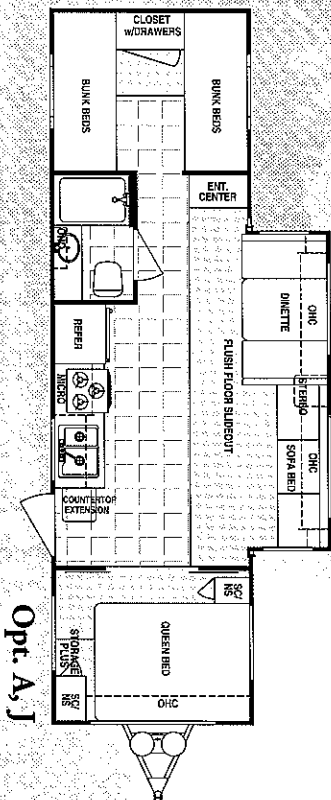
2002 Classic Travel Trailer Floor Plans

27FK-DSL



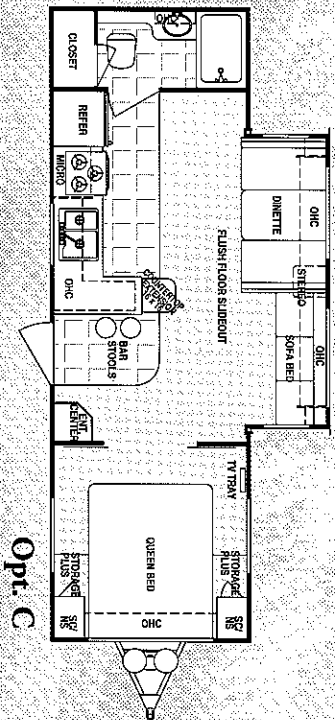
Opt. C, M

31BH4-DSL



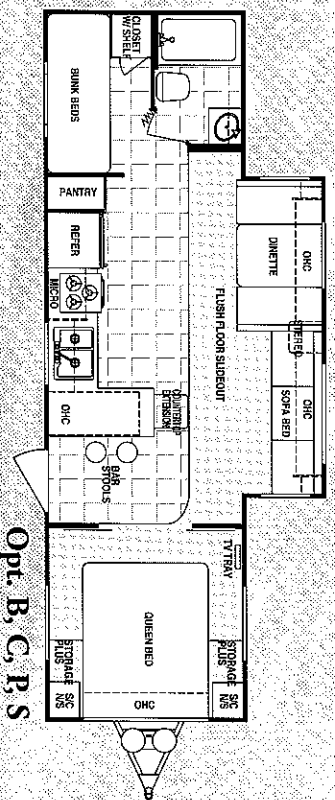
Opt. A, J

28FB-DSL



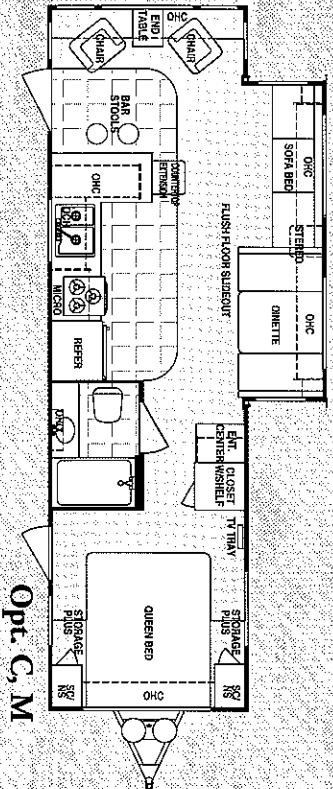
Opt. C

31BH-DSL



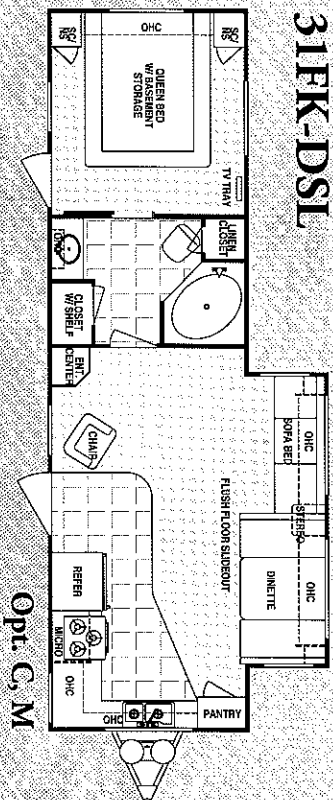
Opt. B, C, P, S

30RL-DSL



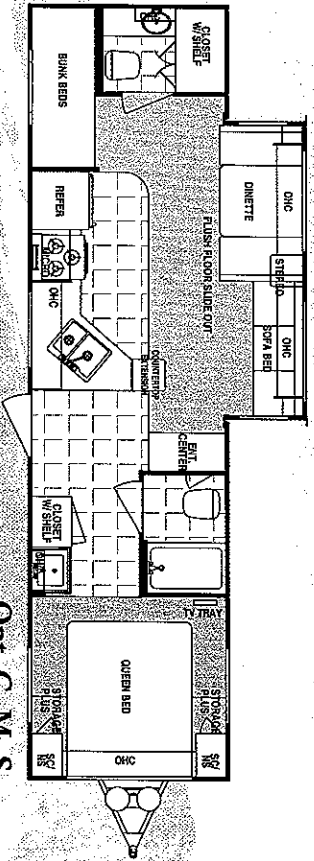
Opt. C, M

31FK-DSL



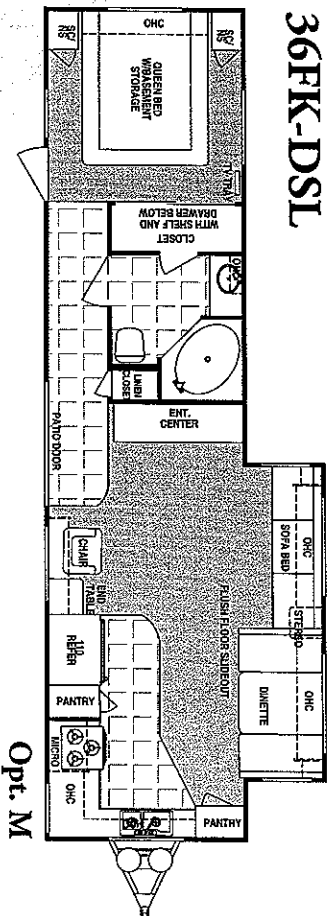
Opt. C, M

33BH-DSL



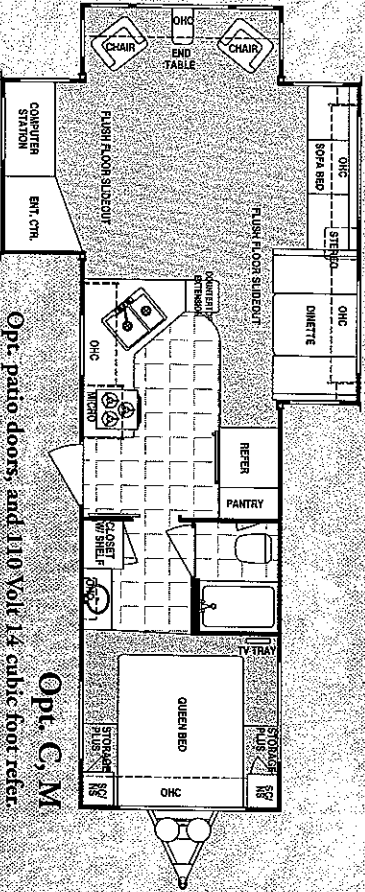
Opt. C, M, S
Opt. patio doors.
Opt. 2nd entry door in bedroom.

36FK-DSL



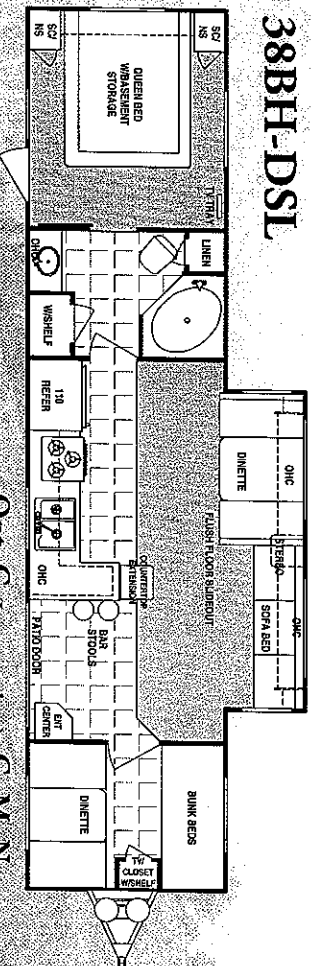
Opt. M

35ES-DSL



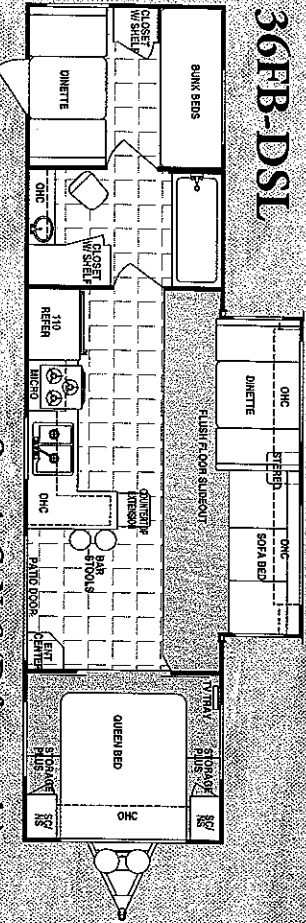
Opt. C, M
Opt. patio doors, and 110 Volt 14 cubic foot refer.
Opt. 2nd entry door in bedroom.

38BH-DSL



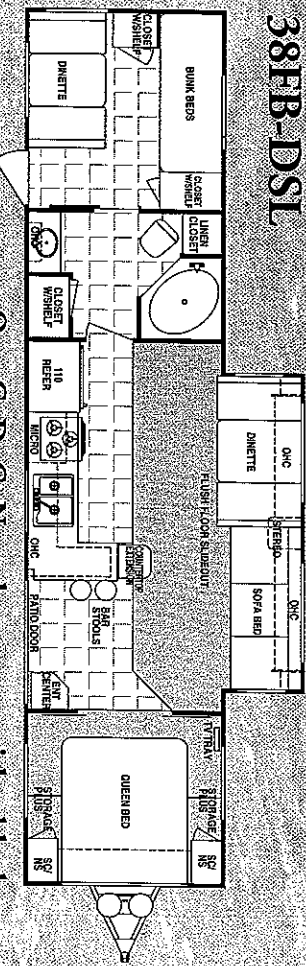
Opt. C (lose rear door), G, M, N

36FB-DSL



Opt. A, C, N, S (D front only)

38FB-DSL



Opt. C, D, G, N, and rear queen island bed

All Classic fifth wheel floor plans available with walk thru bath option with Neo Angle Shower

2002 Classic Specifications & Weights

Travel Trailers

	27FK-DSL	28FB-DSL	30RL-DSL	31BH4-DSL	31BH-DSL	31FK-DSL	33BH-DSL	35ES-DSL	36FB-DSL	36FK-DSL	38BH-DSL	38FB-DSL
Length	28'5"	29'5"	32'8"	33'	32'5"	32'5"	33'	35'2"	38'	38'	39'5"	39'5"
Exterior Width	8'	8'	8'	8'	8'	8'	8'	8'	8'	8'	8'	8'
Exterior Height	10'10"	10'10"	10'10"	10'10"	10'10"	10'10"	10'10"	10'10"	10'10"	10'10"	10'10"	10'10"
Interior Height	7'8"	7'8"	7'8"	7'8"	7'8"	7'8"	7'8"	7'8"	7'8"	7'8"	7'8"	7'8"
Hitch Dry Weight	964	904	844	890	810	886	1020	1060	940	1200	1352	1150
GVWR	9764	7904	9644	9690	9610	9686	11,180	11,460	9740	10,000	11,512	11,310
GVW	6552	6246	7118	7000	6818	6990	7380	8430	7650	8112	8936	7966
NCC	3212	1558	2326	2690	2792	2696	3800	3030	2090	1888	3176	3344
Fresh Water (approx.)	50	50	50	50	50	50	50	50	50	50	50	50
Dual Holding Tanks (approx.)	90	50	60	50	50	90	120	90	60	90	60	60
Furnace Size BTU'S	ST205/75R15D	ST205/75R15D	ST225/75R15D	ST225/75R15D	ST225/75R15D	ST235/75R15D	ST235/75R15D	ST225/75R15D	ST225/75R15D	ST225/75R15D	ST225/75R15D	ST225/75R15D
	31	31	35	35	35	35	35	35	35	35	35	35

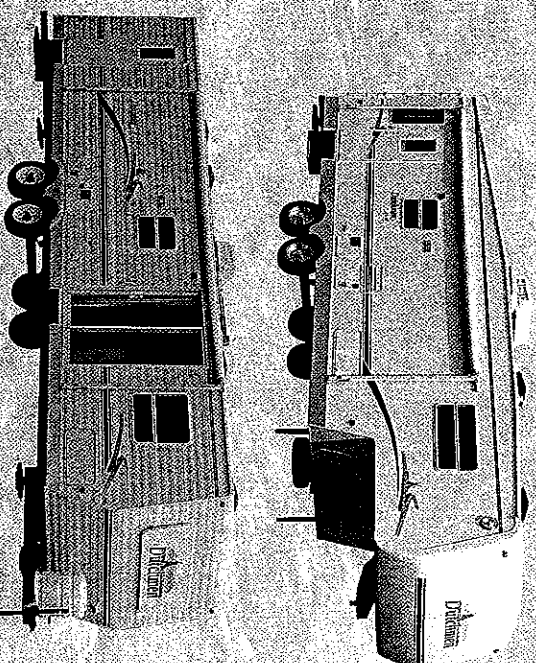
Vehicle Loading—Every effort has been made to provide the greatest number of options for the recreation vehicle owner. Along with these choices comes the responsibility to manage the loads that are imposed by the choices so that they remain within the manufacturer's specified chassis weight limits. Do not overload the recreation vehicle.

Dry weights based on standard features; optional equipment not included. Net carrying capacity (NCC) determined by subtracting unloaded vehicle weight (GVW) from gross vehicle weight (GVWR) and includes fluids, options and cargo. Liquid capacities and weights are approximate only.

Warning: This information is intended as a guide only. Weights of individual vehicles may vary. Consult your owner's manual for complete loading, weighing and towing instructions.

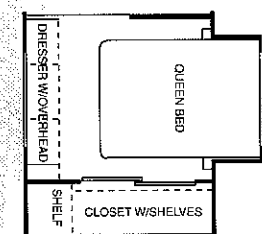
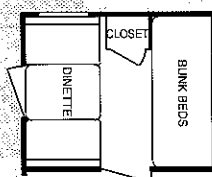
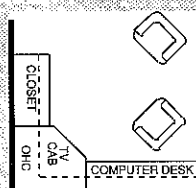
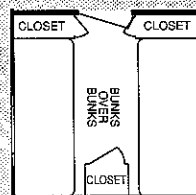
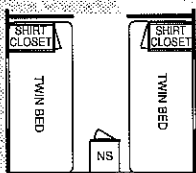
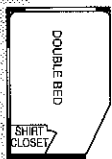
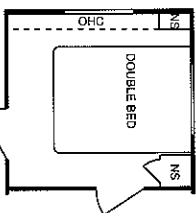
Fifth Wheels

	27RK-H5	27RL-H5	28KS-H5	30RK-H5	30RL-H5	33ES-H5	35BH-H5	36SS-H5
Length	27'11"	30'5"	31'8"	30'11"	30'11"	34'6"	33'5"	N/A
Exterior Width	8'	8'	8'	8'	8'	8'	8'	8'
Exterior Height	12'5"	12'5"	12'5"	12'5"	12'5"	12'5"	12'5"	12'5"
Interior Bedroom Height	70"	70"	70"	70"	70"	70"	70"	70"
Hitch Dry Weight	11302	17281	2006	1402	N/A	1548	1848	11576
GVWR	10,102	10,538	12,166	10,202	N/A	11,708	12,008	11,736
GVW	6620	8108	8452	7644	N/A	9122	9168	9458
NCC	2482	2430	2734	2358	N/A	2586	2840	2278
Fresh Water (approx.)	50	50	50	50	50	50	50	50
Dual Holding Tanks (approx.)	90	90	90	90	90	90	120	90
Furnace Size BTU'S	ST225/75R15D	ST225/75R15D	ST225/75R15D	ST225/75R15D	ST225/75R15D	ST225/75R15D	ST225/75R15D	ST225/75R15D
	31	31	31	35	35	35	35	35



Lites & Classics

Optional Floor Plans



OPTION: A
REAR DOUBLE BED

OPTION: B
DOUBLE BED

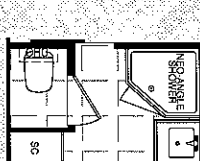
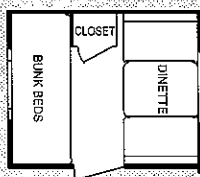
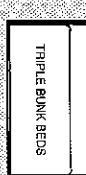
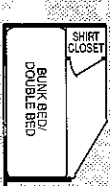
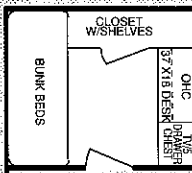
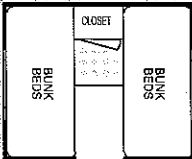
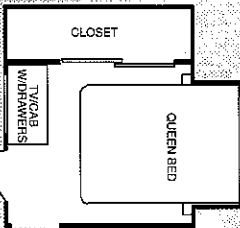
OPTION: C
TWIN BED

OPTION: D
BUNKS OVER BUNKS

OPTION: G
COMPUTER DESK

OPTION: J
BUNK BEDS

OPTION: K
QUEEN BED



OPTION: H
QUEEN BED

OPTION: N
BUNK BEDS

OPTION: O
BUNK BEDS

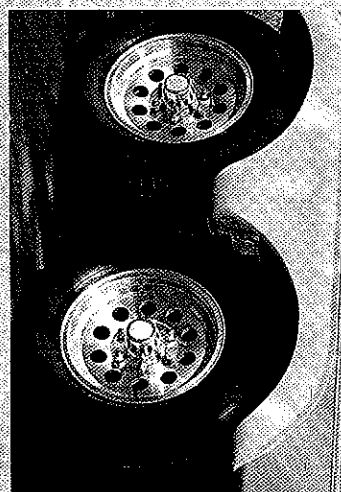
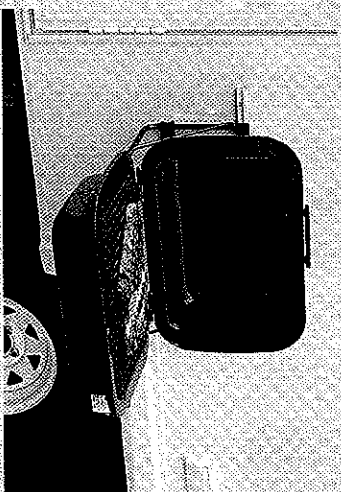
OPTION: P
BUNK BED

OPTION: S
TRIPLE BUNK BEDS

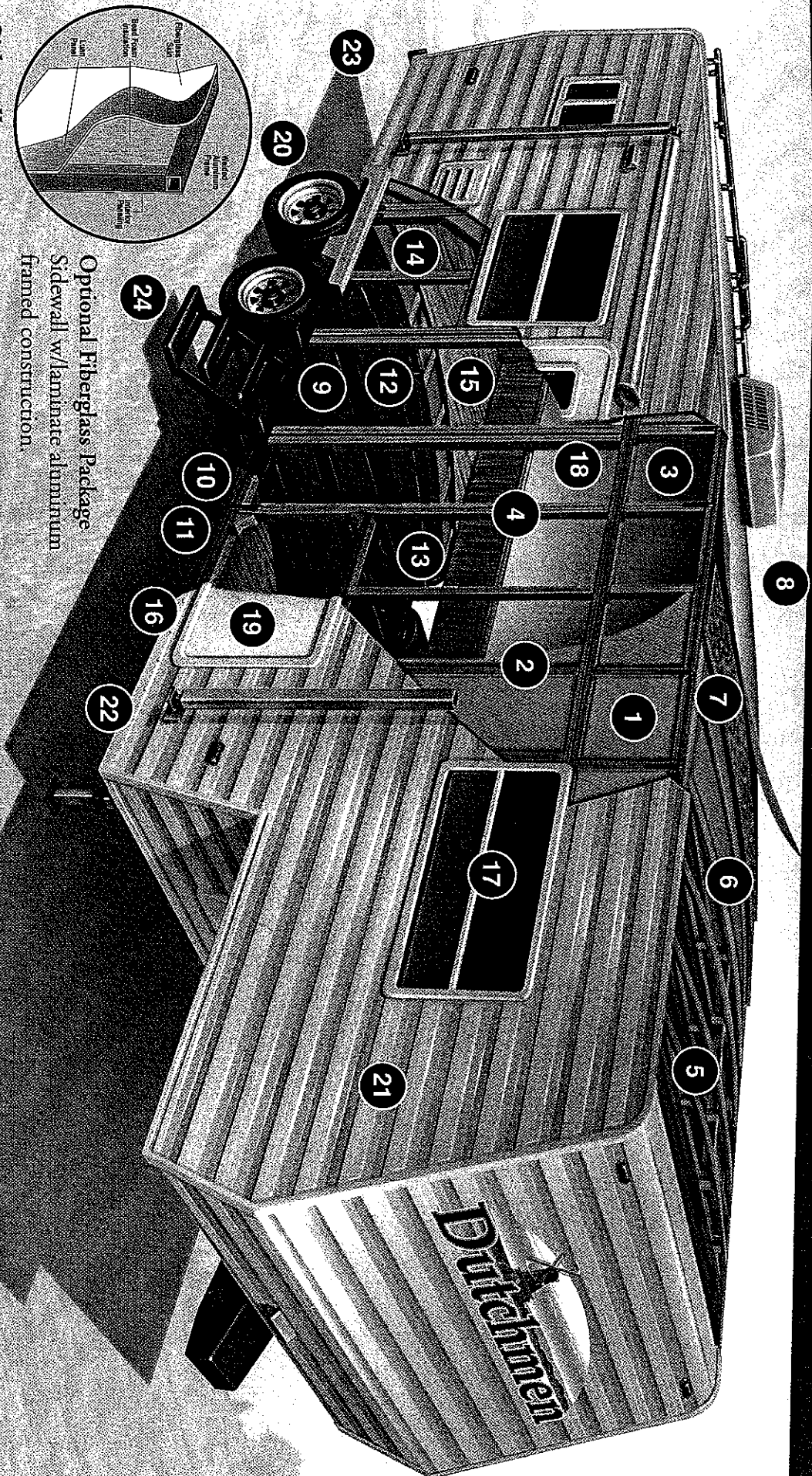
OPTION: T
BUNK BEDS

OPTION: V
SHOWER

Optional Accessories



2002 Dutchmen Construction



Optional Fiberglass Package Sidewall w/laminate aluminum framed construction.

Sidewalls

- 1 Fiberglass insulation - cut & fitted for full expansion
- 2 2" x 2" on 16" centers with an extra 2" belt rail around the perimeter for extra strength
- 3 Galvanized steel straps around entire construction perimeter - tying roof to sidewall & ceiling
- 4 Double or triple studding around all doors and windows

Roof

- 5 Large 5" truss rafters with 3" grade for better water run off
- 6 Fiberglass insulation - cut and fitted
- 7 3/8" wood roof decking full length of the coach
- 8 Dacor Corp. butte-ply seamstress EPDM roof covering w/fire retardent backing and 12-year warranty

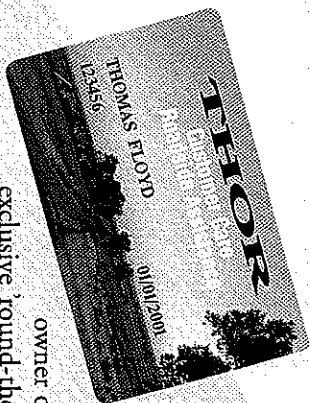
Floor

- 9 I-beam frame cambered to add constructional integrity
- 10 Large support outriggers w/solid continuous weld
- 11 Polyflex underneath wrapped around the floor for extra water protection
- 12 2" x 3" studs running lengthwise to allow for heat duct installation
- 13 Fiberglass insulation - cut & fitted
- 14 5/8" exterior grade tongue-&-groove plywood floor
- 15 Either high grade vinyl flooring or stain-resistant carpet
- 16 Notice that the sidewall is placed on top of the floor

Exterior

- 17 Extra large tinted radius valance clamp ring windows that are sealed with butyl rubber for one of the best watertight seals in the industry
- 18 30" radius entry door on most floor plans
- 19 Exterior storage "Storage Plus" wherever possible
- 20 Oversized radial tires
- 21 Shock Absorber aluminum - 4024
- 22 Bottom exterior aluminum attached with screws thru the side-water cannot be trapped, no staples to penetrate wood, or rust and fall out
- 23 Rear bumper with hidden sewer hose compartment
- 24 Top quality - easy to use double or triple steps

Just Show Your Card and Go!



exclusive, round-the-clock Customer Care Program.

We build our products better and we protect you with the industry's best warranty coverage, but we know that sometimes things can go wrong on the road. So when you become the proud owner of a new Dutchmen, it's just the beginning of our

Customer Care provides complete and fully paid roadside assistance, emergency road service, and special warranty support benefits that go with you wherever you travel. You get immediate access to fast, dependable service when and where you need it.

Add our toll-free warranty and service appointment assistance and a technical assistance hot-line and you have the security and peace of mind of full-time support.

Our exclusive 24-hour Customer Care benefits include:

- Fully paid emergency roadside assistance
- Free jump starts
- Free fuel delivery
- Free lock-out service
- Free on-site mechanical service in the event of a break-down
- 24-hour technical hot-line
- Toll-free service appointment scheduling nationwide
- Warranty service assistance at over 6,800 qualified service agencies
- Free customer trip routing and map service.

At Dutchmen we want you to be able to enjoy your new trailer or fifth wheel to the fullest. That's why we've provided Dutchmen Customer Care to take care of the problems that could spoil your travels.

THE INDUSTRY'S BEST WARRANTY—BY FAR!

We're so confident in the design and construction of our products that they are covered by Thor's exclusive Full 2-Year Standard Warranty: "Hitch-to-bumper" coverage to protect your RV investment.

Your Full 2-Year Warranty Includes*:

- | | | |
|----------------|------------------------|----------------|
| • Refrigerator | • Slide-out Mechanisms | • LP tanks |
| • Furnace | • Power converter | • Water heater |
| • Range | • Plumbing | • TV antenna |
| • Microwave | • Electrical | • Lavatory |
| • Water pump | • Doors | • Awnings |
| • House stereo | • And much more... | |

*See individual company warranty statements for details.



This brochure is printed on recycled paper as part of Thor's corporate effort to minimize waste and conserve our natural resources. Providing safe, fuel-efficient recreational vehicles is Thor's way of further demonstrating our role as the industry leader in safeguarding our nation's environment.



305 Steury Ave. • Goshen, IN 46528
574.534.1224 • Fax 574.533.3807
Service, Warranty & Parts 574.537.0700
www.dutchmen-rv.com

Your Local Dealer

Product information, specifications, and photography in this brochure were as accurate as possible at time of printing. Photographs may contain some features that are optional on your vehicle. Since we continually strive to improve our products, actual products may differ. Price and specifications are subject to change without notice. All capacities are approximate and dimensions are nominal. Some features shown are optional and may be different or unavailable in Canada.